

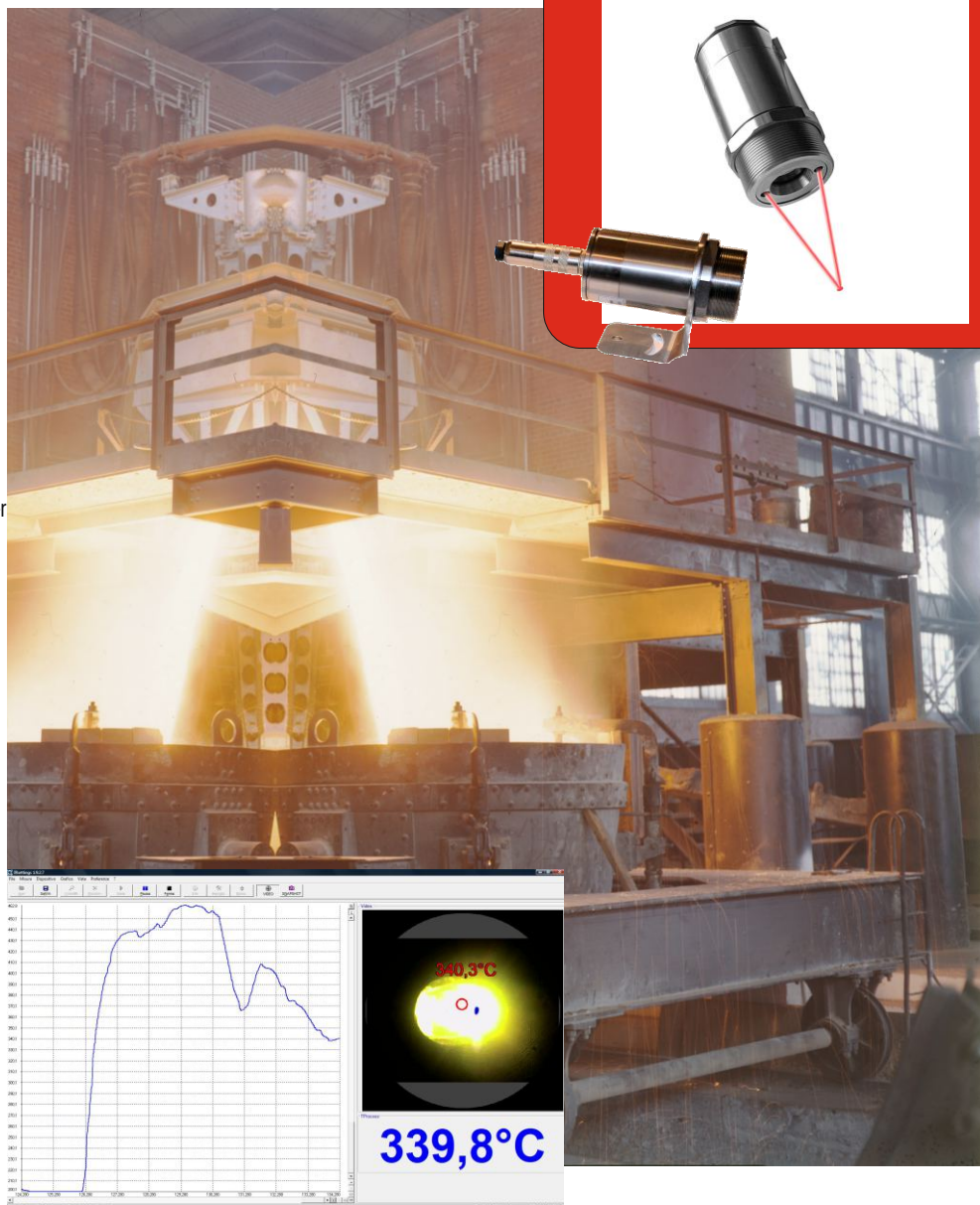
# IRtech Radiamatic IR40 VLS 160

Video TRX 2-wire Smart Process Infrared Thermometers

**IRtech**  
Infrared Technology

- Temperature range up to 1600°C
- Optical resolution up to 300:1  
Close focus 0,5mm
- 1,6 $\mu$ m  
Spectral response
- Video+Dual laser true target pointer
- 2-wire 4-20mA
- Alarm output
- Up to 70°C of ambient  
temperature without cooling
- 10mS response time
- Emissivity settings on board
- Connector with  
cable
- USB interface with  
IR Settings Windows software

CE



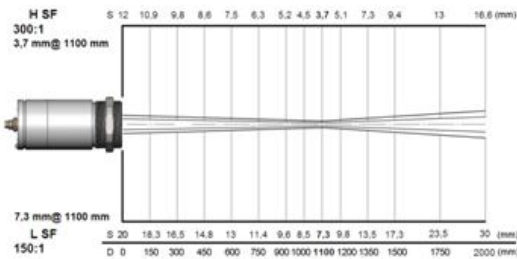
IRtech Radiamatic IR40 series is a 2-wire smart infrared thermometer. The unit is powered by the loop providing scalable output on 4-20 mA. An USB interface is available for direct PC connection for online operation or setting through the software. An alarm output is available to avoid the use of an additional panel meter. The smart signal processor allow fast measurements applying also digital filters like average or advanced procedure as pick picker and hold. The dual laser aiming simplify the alignment of the thermometer on the target identifying the real area of measurement. The laser can be powered and switched on directly by keyboard or remotely by digital interface. Video output can be used for aiming in addition to laser pointer.

### Models

Models	LS 160L	LS 160H
Temperature range	200 - 800 °C	385 - 1600 °C
Accuracy 23°C±5°C	±(0,3% rdg or ±2°C) **	±(0,3% rdg or ±2°C) **
Repeatability 23°C±5°C	±(0,1% or ±1°C) **	±(0,1% or ±1°C) **
D:S target ratio	300:1	300:1
Response time	10 mS	10 mS
Spectral response	1.6 µm	1,6 µm

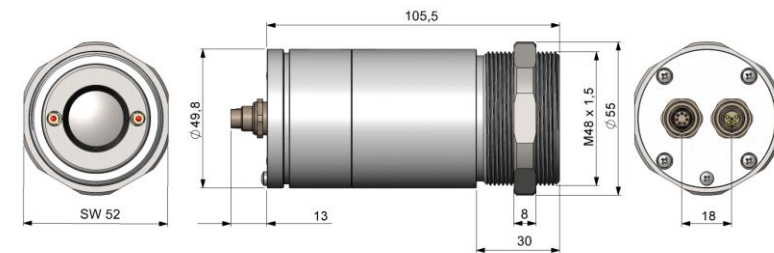
\* whichever is greater

\*\* E=1, response time 1s

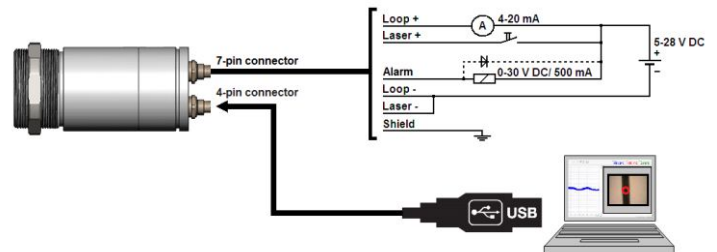


IR 40 LS 160H optics

...FF	12 mm@ 3600 mm
...SF	3,7 mm@ 1100 mm
...CF2	0,5 mm@ 150 mm
...CF3	0,7 mm@ 200 mm
...CF4	1,5 mm@ 450 mm



Built-in  
Terminals



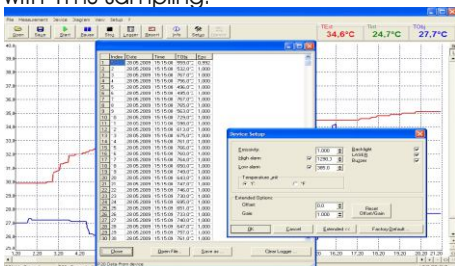
Air purge

Cooling Jacket



### IR Settings Windows Software

Software allows sensor setup and remote control. The real time graphic display and datalogging show the temperature trends with 1mS sampling.



### Ordering Code

**Code**      **Model**  
**IR40**      **IRtech IR40** includes mounting nut and bracket ACCTLF8 & instruction manual.

**Table A**      **Range**  
VLS 160L 200 to 800°C  
VLS 160H 385 to 1600°C

**5mt USB cable with  
Windows IR Setting software included**

**Table B**      **Optics**  
SF      Standard focus optic  
CFx      Close focus optic  
FF      Far distance optic

**Table C**      **Report of Calibration**  
0      none  
CC      EA traceable with data

**Table D**      **Connector + Cable**  
C3      Connector with 3mt cable  
C5      Connector with 5mt cable  
C10      Connector with 10mt cable  
HT      HT cable model

**IR40 - LS 160H - SF - 0 - C3HT**      Typical ordering code